



Hospital

Planning, construction and installation of prefabricated elements on site

Reference

Strandklinik St. Peter-Ording

Customer

Strandklinik St. Peter-Ording

Location

St. Peter-Ording, Germany

Year

2013

Type of project
Renovation

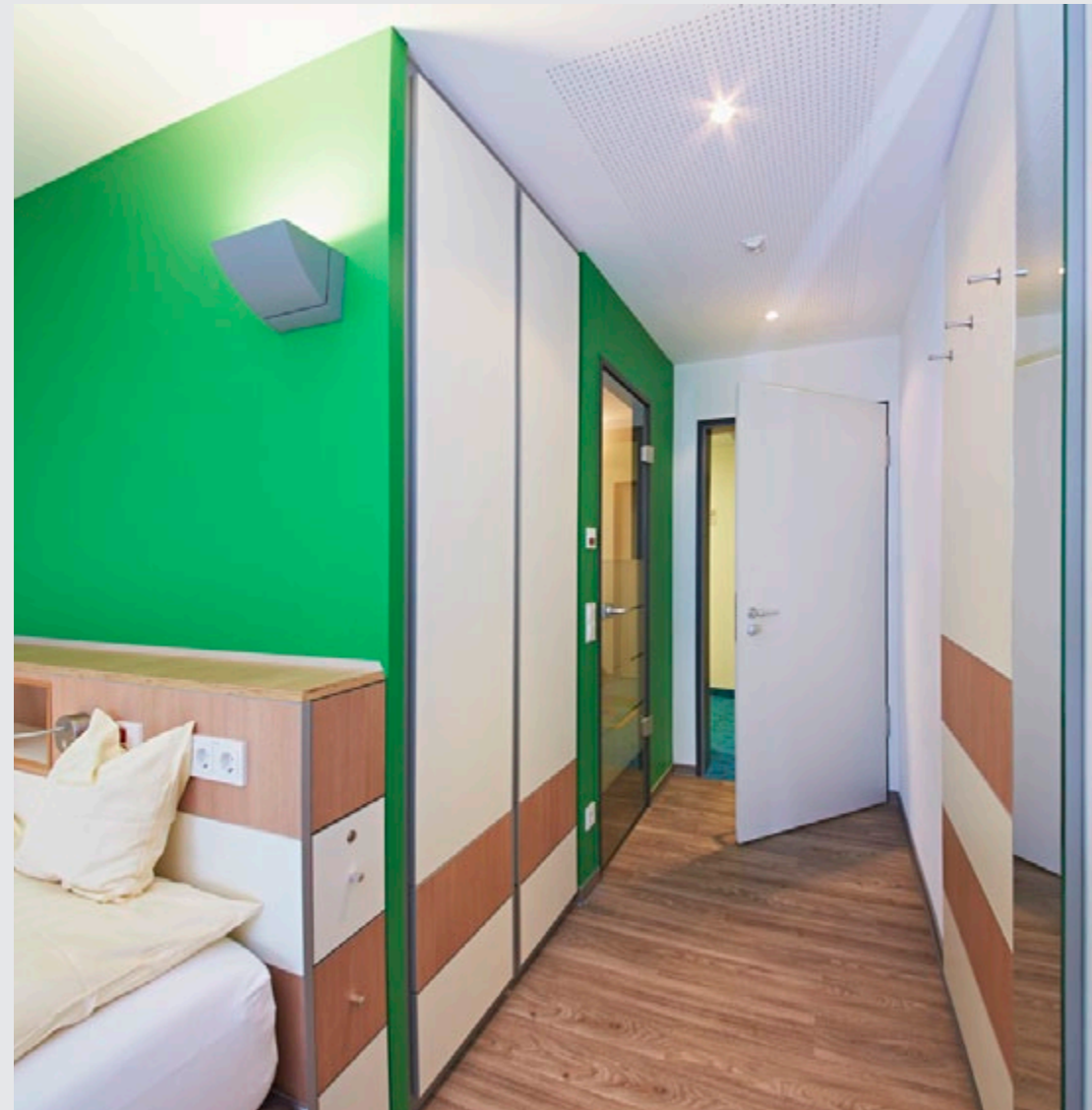
In various steps, prefabricated bathroom components were delivered, 88 pieces in total.

Wall elements including reinforcements, electrical sockets, pipe integrations together with the existing walls, made up the new bathrooms.

Architect Dipl.-Ing. Peter Tiffe

Contractor Strandklinik St. Peter Ording

Tradesman Fliesen Höverbrinks., Gescher



Short description

Hospital Strandklinik St. Peter-Ording

Focusing on the entire person. After an illness, it can be difficult to adapt back to everyday life. The Strandklinik St. Peter-Ording would like to help and accompany the patient on a part of this journey. The help given is far more than just medical: it is more than anything, personal attention and support that is given to the patients.

Living with a chronic illness and the impairments which result from this which need to be dealt with in daily life, as well as the integration back into daily life following illnesses which have resulted in lasting disabilities and impairments requires a high-level of empathy on the part of the staff in the hospital. This is the particular strength of the St. Peter-Ording hospital, to not just provide medical care but also the best possible emotional and social support when and where it is needed.



Used Products

Basis Products

-

Used Products

Individual Products

38 prefabricated built-in bathrooms

Used Products

Plug and Play Systems

-



Bathroom component
Front view



Bathroom component
Lateral view



Particular requirements

Within the framework of the renovation and expansion of the hospital, new bathrooms were to be built in the patients' rooms. The following requirements were to be met:

- shower area
- wash basin or wash basin frame
- toilet
- preparatory work for electric and light components

