



Loft



Reference
Redevelopment of an industrial loft

Location
Berlin

Year
2014

Project type
Redevelopment

Architect designyougo
Gesellschaft von Architekten mbH
Schönhauser Allee 151
10435 Berlin
www.designyougo.com



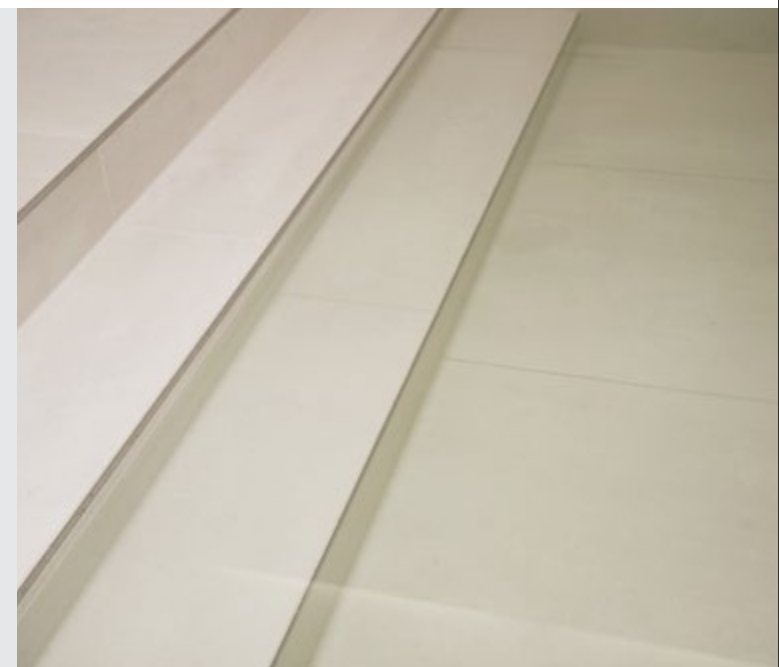
Requirements

- Waterproof
- Individually customisable
- Tileable

Brief description

The former industrial loft was completely gutted and converted into a modern loft. Brick walls and solid steel girders provide the typical loft accents.

The strict subdivision of the rooms also set the example for the square design of the bathtub, which was constructed using wedi building boards and then fully tiled.



Products used
Base products

- Building board
- wedi 610 adhesive sealant
- Reinforcement tape

Products used
Individual products

-

Products used
Plug & Play systems

-

